



Cambridge International AS & A Level

CLASSICAL STUDIES

9274/11

Paper 1 Greek Civilisation

October/November 2023

1 hour 30 minutes



You must answer on the enclosed answer booklet.

You will need: Answer booklet (enclosed)

INSTRUCTIONS

- Answer **two** questions in total:
Answer questions from **one** section only.
For each section, follow the instructions inside on which questions to answer.
- Follow the instructions on the front cover of the answer booklet. If you need additional answer paper, ask the invigilator for a continuation booklet.

INFORMATION

- The total mark for this paper is 50.
- The number of marks for each question or part question is shown in brackets [].

This document has **8** pages. Any blank pages are indicated.

Section A: Alexander the Great

Answer **Question 1** and **either** Question 2 **or** Question 3.

1 Study the image and answer the questions:



(Mosaic of Alexander at the Battle of Issus)

- (a) (i) In which year did the Battle of Issus take place? [1]
- (ii) What is the name of the horse Alexander is shown riding? [1]
- (iii) Which members of Darius' family did Alexander capture after the battle? [3]
- (b) 'Alexander's personal bravery is the only reason he won battles.'
Using the image as a starting point, explain how far you agree with this statement. [20]

[Total: 25]

EITHER

- 2** 'Olympias had more impact on Alexander's life than any other person.'
Explain how far you agree with this statement. [25]

OR

- 3** 'Alexander should not be called "the Great" because his empire fell apart after his death.'
To what extent do you agree with this opinion? [25]

Section B: Aristophanes

Answer **Question 4** and **either** Question 5 **or** Question 6.

4 Read the passage and answer the questions:

	[AEACUS goes back into the palace. DIONYSUS collapses to the ground in terror.]	
XANTHIAS:	What are you doing down there?	
DIONYSUS:	Oh no! My bowel is empty. Call on the god!	
XANTHIAS:	Stand up! Somebody might see you.	5
DIONYSUS:	I feel faint. Give me a sponge. [XANTHIAS extracts a sponge from one of the bags.] Press it on my heart, there's a good chap.	
XANTHIAS:	There you go.	
DIONYSUS:	No, here. That's it.	
XANTHIAS:	The heart's slipped a bit, hasn't it?	10
DIONYSUS:	What? Oh, yes – the sudden shock. It's taken refuge in my... lower intestine.	
XANTHIAS:	[realizing what has happened within DIONYSUS' clothing] O most cowardly of men and gods!	
DIONYSUS:	How can you say that? When I had the courage to ask for a sponge. A coward wouldn't have done that.	15
XANTHIAS:	What would he have done?	
DIONYSUS:	Wallowed in his own filth. At least I got up and cleaned myself.	
XANTHIAS:	How very brave of you.	
DIONYSUS:	Yes, I rather think it was. Most people would have been terrified by all those threats and long words. Confess, now, weren't you a tiny bit scared yourself?	20
XANTHIAS:	Not a bit.	
DIONYSUS:	Well, if you're feeling so brave and heroic, how about taking my place? Here you are, you take the club and lion-skin – a chance to show your courage – and I'll carry the luggage for you.	25
XANTHIAS:	Anything you say. You're the boss. [They exchange roles.] There, how do I look?	

(Aristophanes, *Frogs*)

- (a) (i) Who is Aeacus (line 1)? [1]
- (ii) Which part of the theatre would have represented the 'palace'? [1]
- (iii) Name the type of humour being used in lines 6–18. [1]
- (iv) Why does Dionysus have a club and lion-skin (line 25)? [2]
- (b) How is Xanthias portrayed in this passage? How typical is this of the way he is portrayed elsewhere in the play? [20]

[Total: 25]

EITHER

- 5 'Greek comedy needs to be watched rather than read to fully appreciate its humour.'
To what extent do you agree with this statement? In your answer you should discuss **at least two** plays. [25]

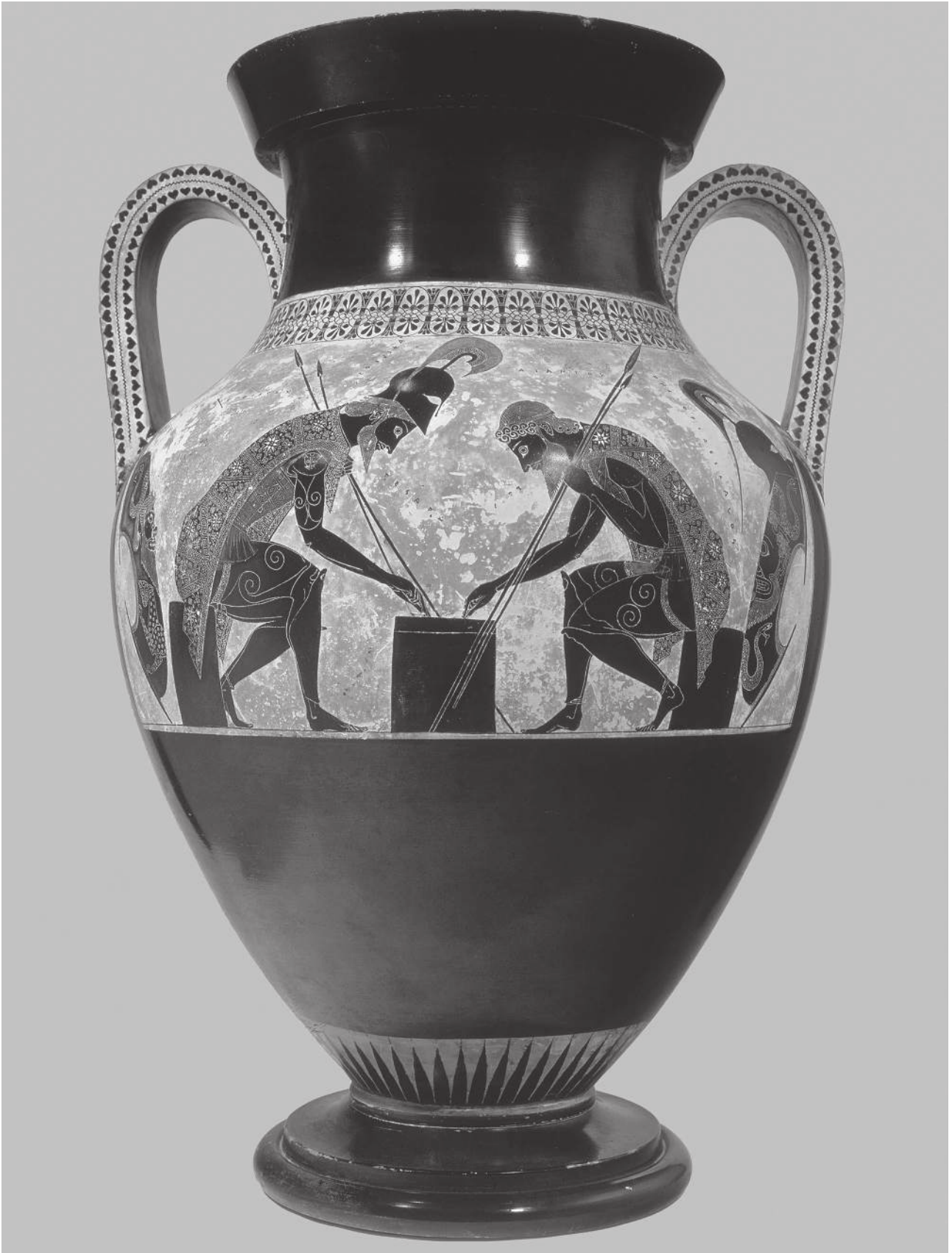
OR

- 6 To what extent do you agree that the Chorus in *Lysistrata* adds far more to the success of the play than the Chorus in *Women at the Thesmophoria*? In your answer, you should discuss **both** plays. [25]

Section C: Themes in Greek Vase Painting

Answer **Question 7** and **either** Question 8 **or** Question 9.

7 Study the image and answer the questions:



- (a) (i) What type of pot is shown in the image? [2]
- (ii) What technique has been used to decorate this pot? [1]
- (iii) Give the approximate date for this pot. [1]
- (iv) Give the name of the painter of this pot. [1]
- (b) 'This pot marks the high point of vase painting in the 6th century BCE.'
How far do you agree with this opinion? In your answer, you should include discussion of **at least two** other pots from the 6th century to explain your answer. [20]

[Total: 25]

EITHER

- 8 'The daily life of women was a popular subject for Greek vase painters.'
What opportunities and challenges did this subject offer to vase painters? Explain your answer with reference to specific pots depicting scenes from the daily life of women. [25]

OR

- 9 'By the end of the 6th century BCE painters were experimenting and exploring different ways of painting and decorating pots.'
To what extent do you agree with this statement? In your answer, you should include discussion of a range of pots from **both** the black-figure **and** red-figure techniques. [25]

BLANK PAGE

Permission to reproduce items where third-party owned material protected by copyright is included has been sought and cleared where possible. Every reasonable effort has been made by the publisher (UCLES) to trace copyright holders, but if any items requiring clearance have unwittingly been included, the publisher will be pleased to make amends at the earliest possible opportunity.

To avoid the issue of disclosure of answer-related information to candidates, all copyright acknowledgements are reproduced online in the Cambridge Assessment International Education Copyright Acknowledgements Booklet. This is produced for each series of examinations and is freely available to download at www.cambridgeinternational.org after the live examination series.

Cambridge Assessment International Education is part of Cambridge Assessment. Cambridge Assessment is the brand name of the University of Cambridge Local Examinations Syndicate (UCLES), which is a department of the University of Cambridge.